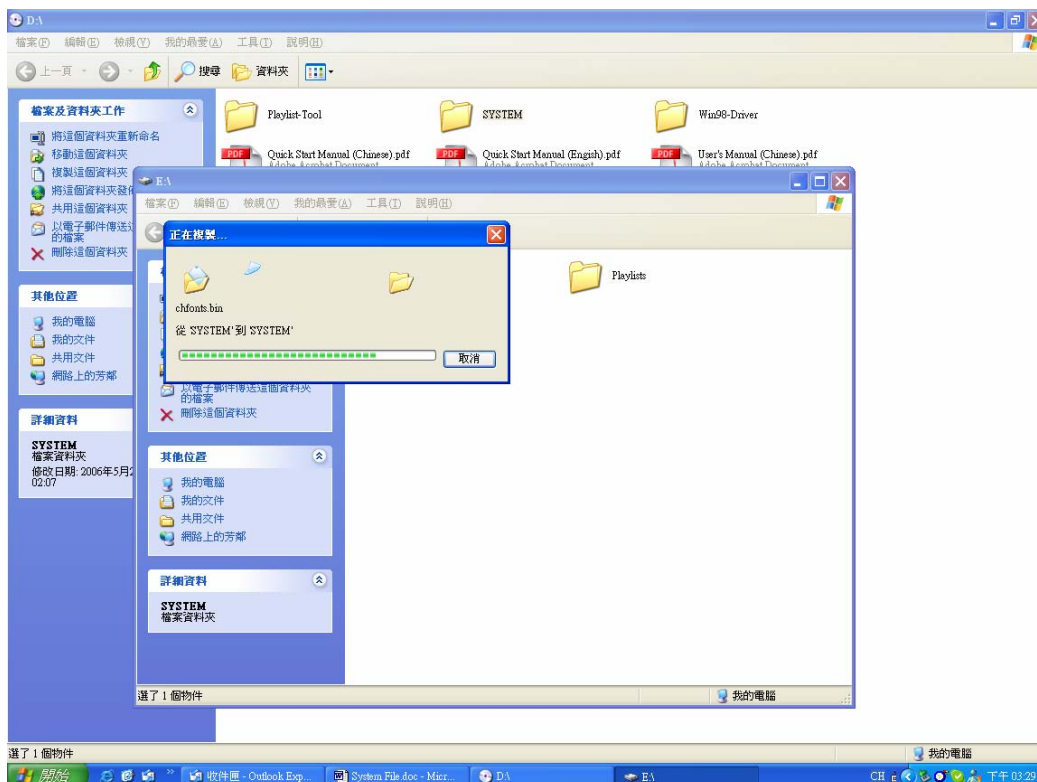


System Recovery Instructions

The following are instructions to reinstall your "System" files if you would accidentally delete this file. When you deleted the default folder <System>, some of the functions would fail, and the screen would show as below.



To fix this problem, please connect the SharePlayer to the PC and copy the whole <System> folder from the driver CD, or go to our website www.shareplayers.com to download the file. Then paste the <System> folder to the SharePlayer Device.



Remove the SharePlayer from the PC and reboot the SharePlayer to complete the recovery process, and the screen would show as below.

